

**Application**

Square posts & Chainlink

Ideal Gate Material

Metal, Wood, Vinyl, Chainlink

Dimensions

Page 50

Installation Video

316
marine grade
stainless steel
components
will not rust



Adjusts
easily to
allow for
gate sag

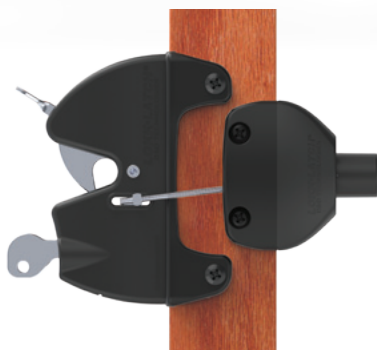
LokkLatch®
models are
all keyed
alike



PRODUCT FEATURE VIDEO



- High-tech, stylish design
- Key lockable - No need for padlock
- External Access Kit (optional) allows for operation from both sides of gate
- Vertical & horizontal adjustment
- Quick and easy to install
- Won't rust or corrode
- Round post model fits most Chainlink diameters

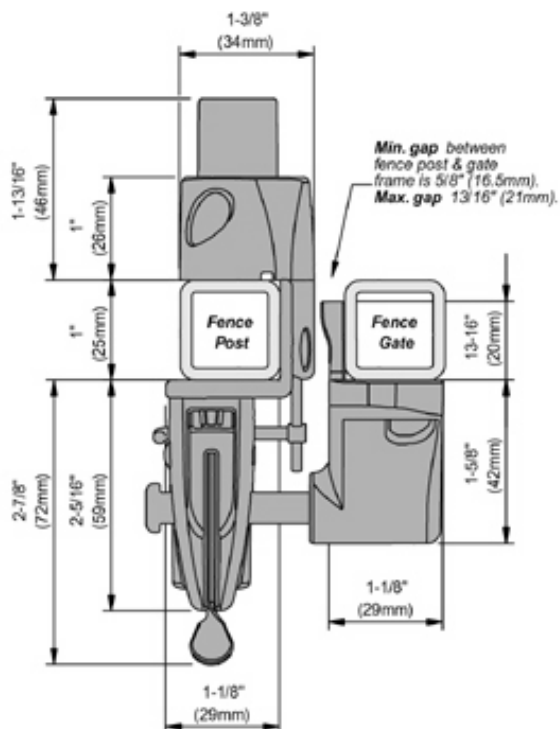


| CODE | FEATURE | COLOR | GATE MATERIAL | IDEAL GAP | GAP VARIANCE |
|---------|------------------------|--------------|--------------------|---------------|-------------------------|
| LLAA | Latch only | Black, White | Metal, Wood, Vinyl | 3/4" (19mm) | 3/8" - 1 1/2" (10-38mm) |
| LLB | EAK only | Black, White | Metal, Wood, Vinyl | - | - |
| LLAAB | Latch + EAK | Black, White | Metal, Wood, Vinyl | 3/4" (19mm) | 3/8" - 1 1/2" (10-38mm) |
| LLABRND | Round Post Latch + EAK | Black | Chainlink | 1 1/2" (38mm) | 1" - 2" (25-50mm) |

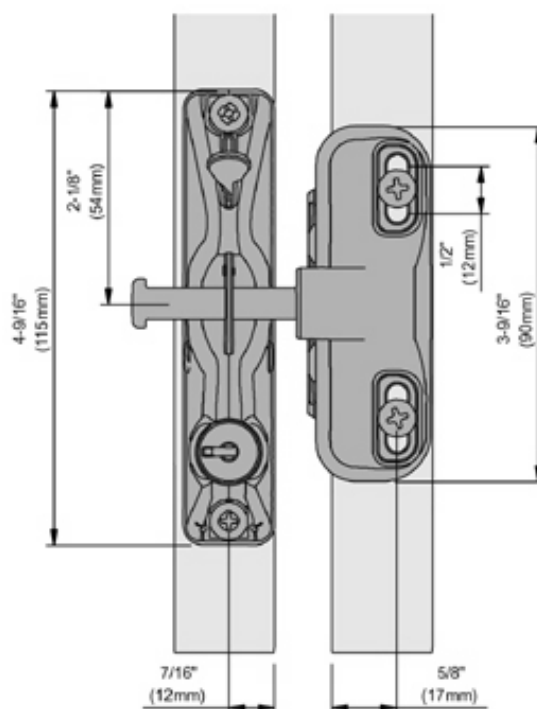
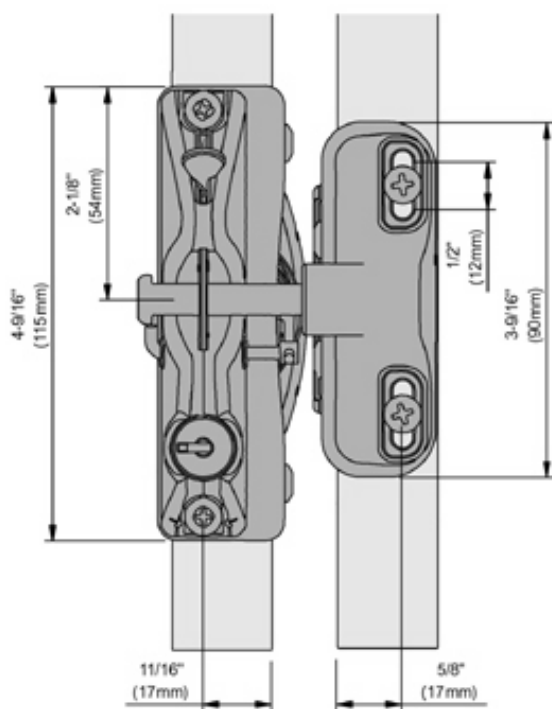
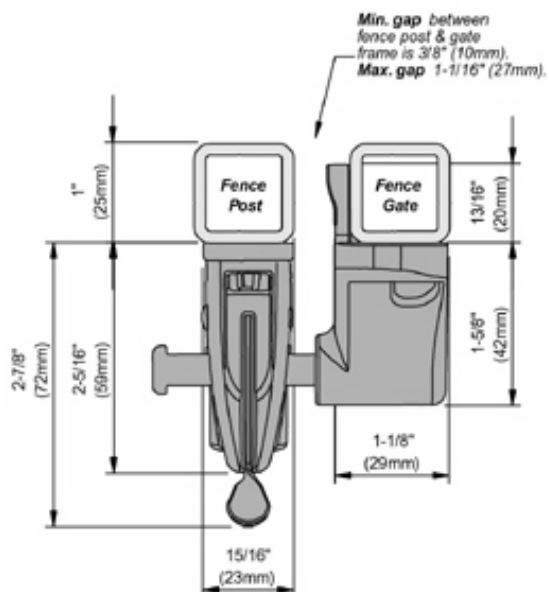


Model: LLAAB

MAX Fence Post size 6"x6"



Model: LLA



NOTE: Both models shown on MIN Post sizes (1"x1")

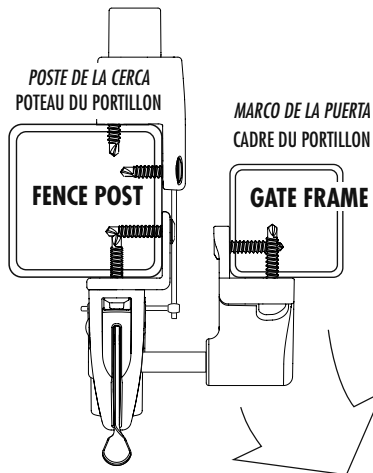
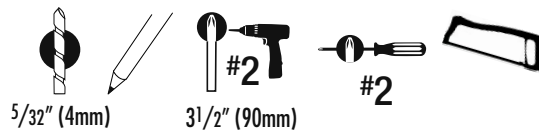
Installation Instructions

Procedimientos de instalación

Instructions d'installation



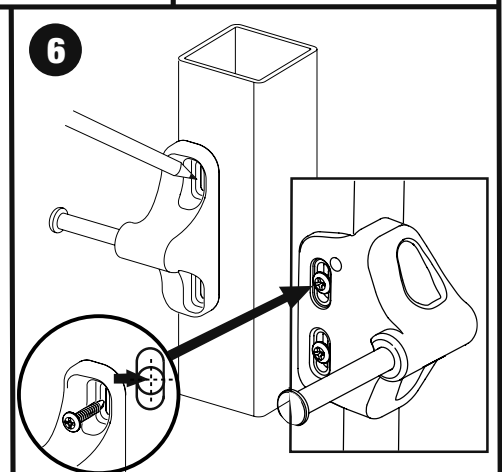
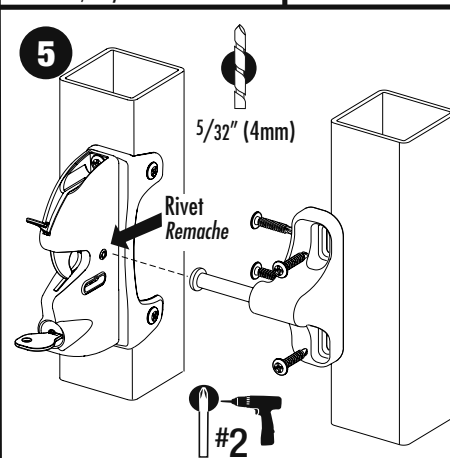
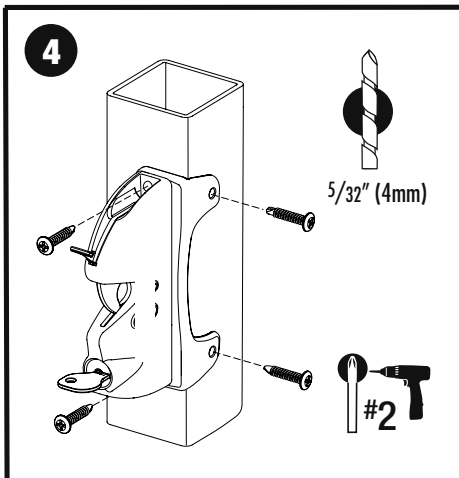
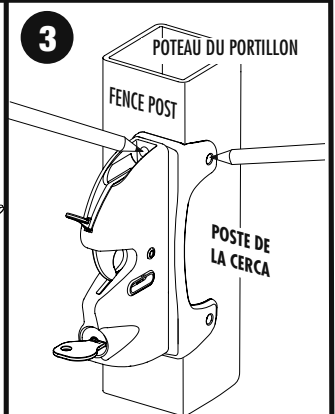
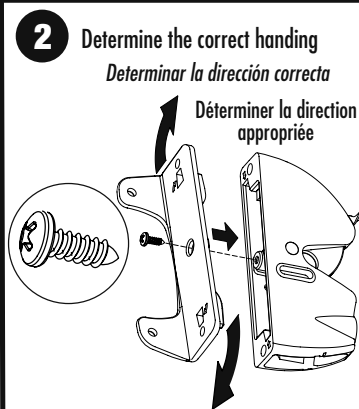
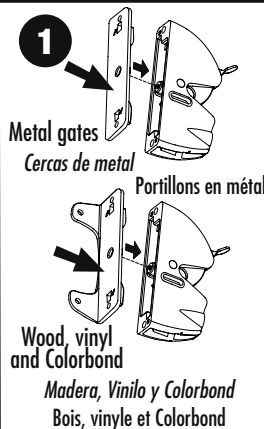
Hi-Performance Hardware



MAIN LATCH BODY

CAJA PRINCIPAL DEL CERROJO

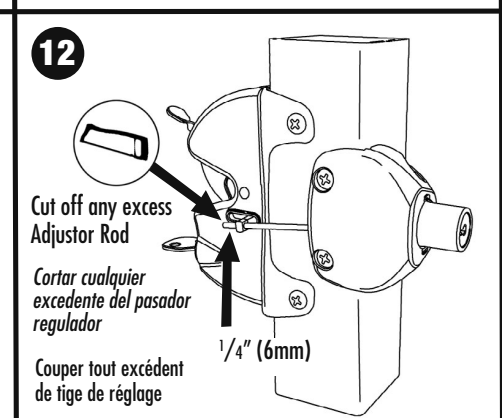
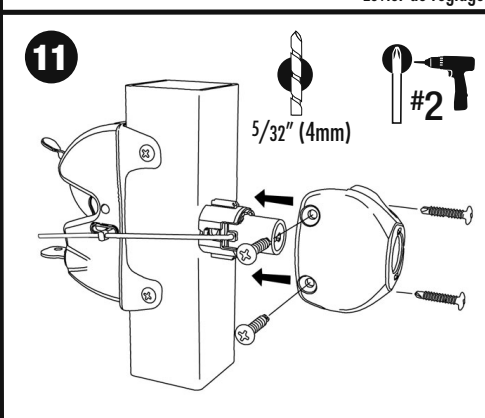
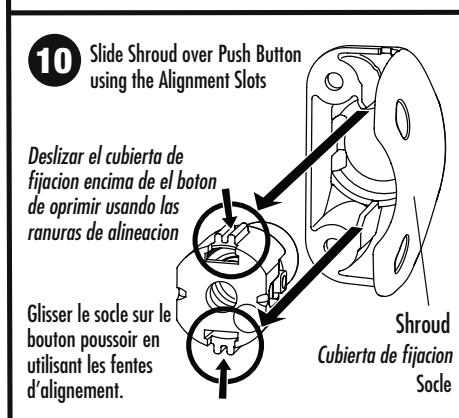
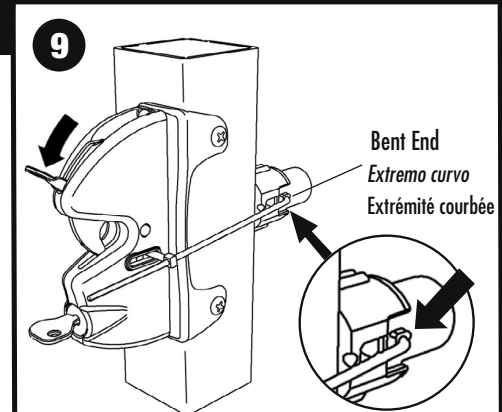
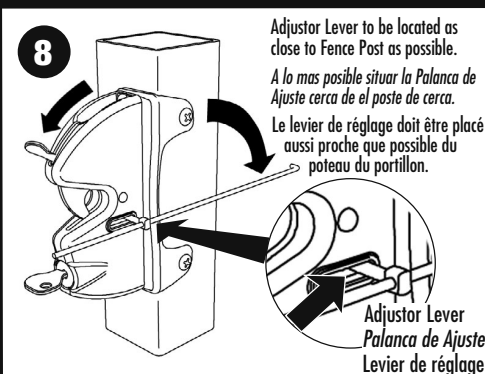
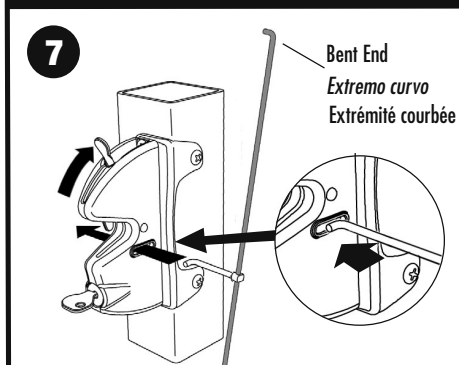
SURRUCE



EXTERNAL ACCESS KIT

JUEGO DE ACCESO EXTERNO

KIT D'ACCÈS EXTÉRIEUR



LLINSTR0034PA • instr LokkLatch 15 12 11

Installation Instructions

Procedimientos de instalación

Instructions d'installation



ENGLISH – International

WARNING: Using LokkLatch® on pool gates is permissible in North America but **NOT** in Australia.

NOTE: If installing the LokkLatch® to a gate leading to a swimming pool or spa, consult your local building official for Code requirements in your area.

MAINTENANCE: REMOVE KEY/S FROM LOCK/S AFTER USE. Do not lubricate the latch with petroleum-based lubricants at any time - use only powdered graphite. Ensure all screws are tightened firmly and that the Latch Body and/or Access Kit is kept free of dirt, sand and other debris which could impair reliable performance.

For a downloadable Adobe Acrobat (.PDF) version of our Limited LIFETIME WARRANTY, go to our website at www.ddtechglobal.com

FRANCAIS

AVERTISSEMENT : l'utilisation du LokkLatch® est autorisée pour les portillons de piscine en Amérique du Nord mais **PAS** en Australie.

REMARQUE : s'adresser au directeur local de la construction pour obtenir les exigences du code de la construction pour l'installation du LokkLatch® sur un portillon donnant accès à une piscine ou à un spa.

ENTRETIEN : RETIRER LA OU LES CLÉS DU OU DES VEROUS APRÈS UTILISATION. Ne jamais utiliser de lubrifiant à base de pétrole sur toute partie du verrou, utiliser uniquement de la poudre de graphite. S'assurer que toutes les vis soient bien serrées et que le logement du verrou et/ou le kit d'accès ne contiennent pas de saleté, de sable, ou tout autre débris qui pourraient affecter les performances.

Pour obtenir une version Adobe Acrobat (.PDF) téléchargeable de notre GARANTIE À VIE limitée, visitez notre site Web à www.ddtechglobal.com

ESPAÑOL (North America)

ADVERTENCIA: Usando LokkLatch en cercas de piscina esta permisible en America del Norte pero NO en Australia.

OBSERVACIÓN: Si se está instalando Lokk Latch® en una puerta para piscina o alberca o spa, consultar a su autoridad de construcción local sobre los requisitos de código relacionados con la instalación y la altura.

MAINTENIMIENTO: RETIRAR LA(S) LLAVE(S) DE LA CERRADURA DESPUÉS DE USAR. No lubricar el cerrojo con lubricantes a base de petróleo en ningún momento. Usar únicamente grafito en polvo. Asegurarse de que todos los tornillos se encuentren ajustados firmemente y que la caja del cerrojo y/o el Juego de acceso no tengan tierra, arena ni ningún escombros que podría impedir el funcionamiento correcto.

Para un version de nuestra garantía limitada de por vida descargable en Adobe Acrobat (.pdf), vaya a nuestro sitio Web en www.ddtechglobal.com



D&D Technologies


Hi-Performance Hardware

AUSTRALIA: Unit 6, 4-6 Aquatic Dr, Frenchs Forest NSW 2086

USA: 7731 Woodwind Drive, Huntington Beach, CA 92647

EUROPE: Niasstraat 1, 3531 WR Utrecht, The Netherlands

www.ddtechglobal.com

LokkLatch and  are trademarks of D&D Group Pty Ltd, are registered in USA and elsewhere. The product is the subject of patent and design rights in USA and elsewhere.
© Copyright D&D Technologies Pty Ltd 2008. Neither whole or part of this publication may be reproduced without prior permission.

LokkLatch and  sont des marques commerciales de D&D Group Pty Ltd qui sont déposées aux États-Unis et ailleurs. Le produit est sujet à des brevets et des droits de modèles aux États-Unis et ailleurs.

LokkLatch y  son marcas comerciales de D&D Group Pty Ltd., registradas en los Estados Unidos y en otros países. El product esta sujeto a los derechos de patentes y disenos en los Estados Unidos y otros países. © Derechos reservados D&D Technologies Pty Ltd 2008. Ni total o parte de esta publicación pueden ser reproducidos sin permiso previo.

LLINST0034PA • instr LokkLatch 15 12 11

info@stedaparts.nl
www.stedaparts.nl

STEDAPARTS
WEBSHOP VOOR BEVEILIGINGSPRODUCTEN