



AVAILABLE SOON

D[®] LOKKLatch[®] DELUXE³

Premium privacy and security gate latch with external access

Fits left- or right-mounted gates

Can be rekeyed to match existing doors

Bigger, stronger fixing strength



PREVIOUS BARCODE

LLDABLRB



NEW BARCODE

LLD3LDRB



- Faster** Easy to install with innovative fitting jig
- Bolder** NEW contemporary body design
- Better** Snap-fit connector rods to lock system
- Stronger** Reinforced body & side fixing strength
- Smarter** More D&D branding to identify fakes



D[®] LOKKLatch[®] DELUXE³

Premium privacy & security gate latch

NEW contemporary body design

- Chamfered edges for a clean design to compliment D&D TruClose[®] hinges.

Tamper resistance

- Side fixing screws cannot be accessed when the gate is closed – gives extra security to tampering

Side fixing legs

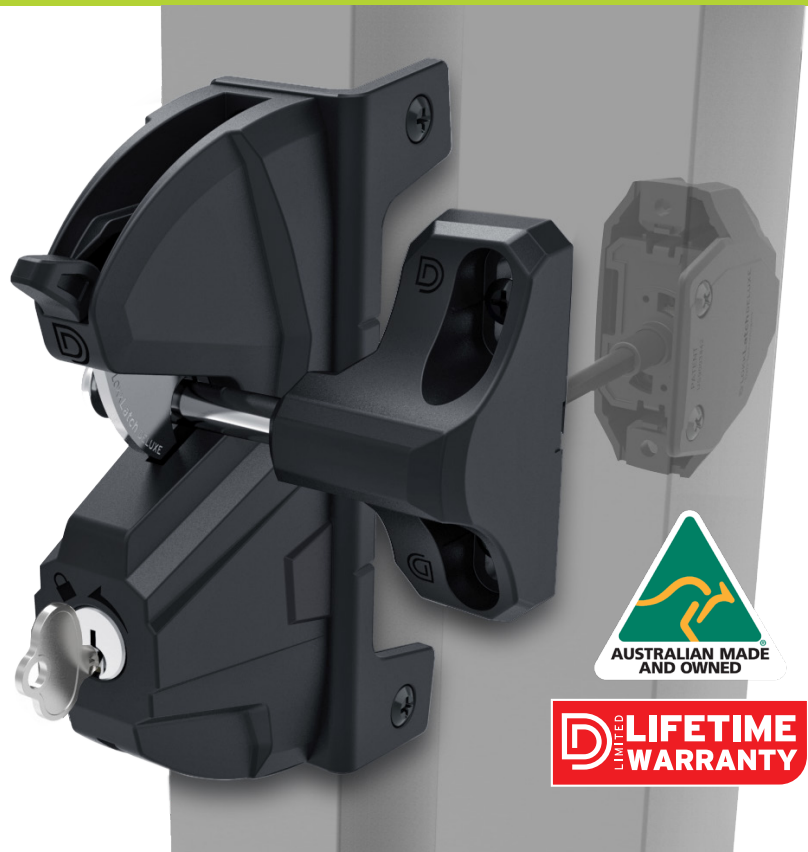
- Fast and easy to install and align with added fixing strength.

Marine grade Stainless Steel

- Striker pin has improved corrosion resistance and performance.
- Branded stainless steel trip plate with laser etched D&D branding.

Key lockable

- No need for padlocks.
- Locks from both sides of the gate.
- Can be rekeyed to match existing locks.



Save time, reduce installation errors

- Simple to install: drill only one hole through post
- Fits left- or right-mounted gates
- Revolutionary mounting is installation template
- Snap-fit connector rod for quick, easy installation
- 2 connector rods included in pack

PREVIOUS BARCODE

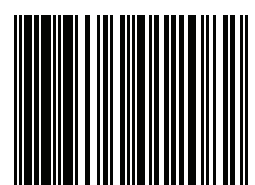
LLDABLRB



7 36494 00982 2

NEW BARCODE

LLD3LDRB



7 36494 01208 2